

MEMORANDUM OF UNDERSTANDING – PART III

Annex # 2022-23

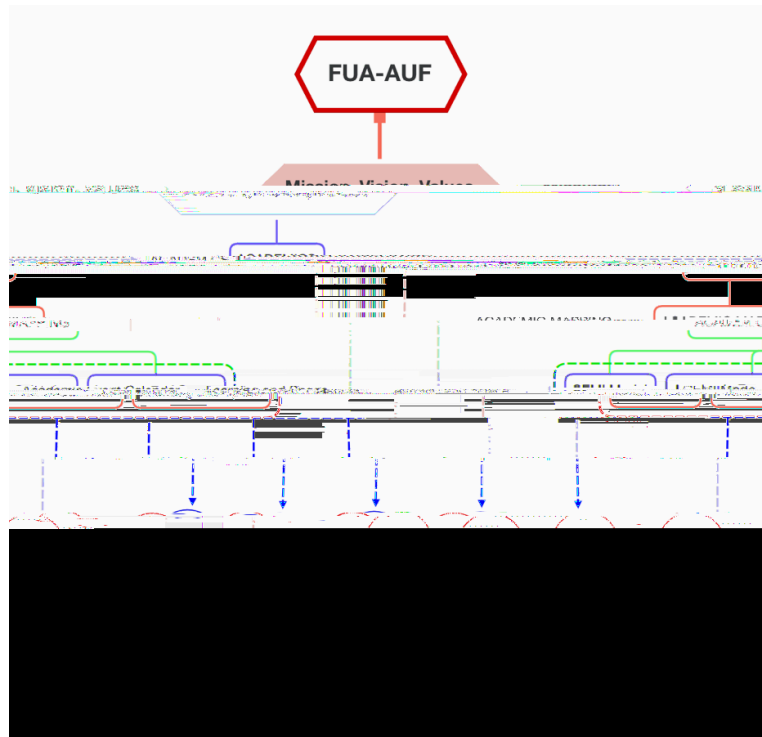
Affiliated Institution: New Jersey City University

THE FUA-AUF EDUCATIONAL MODEL: *COMMUNITY ENGAGEMENT, CULTURAL INTEGRATION, EXPERIENTIAL LEARNING* IN INTERNATIONAL EDUCATION

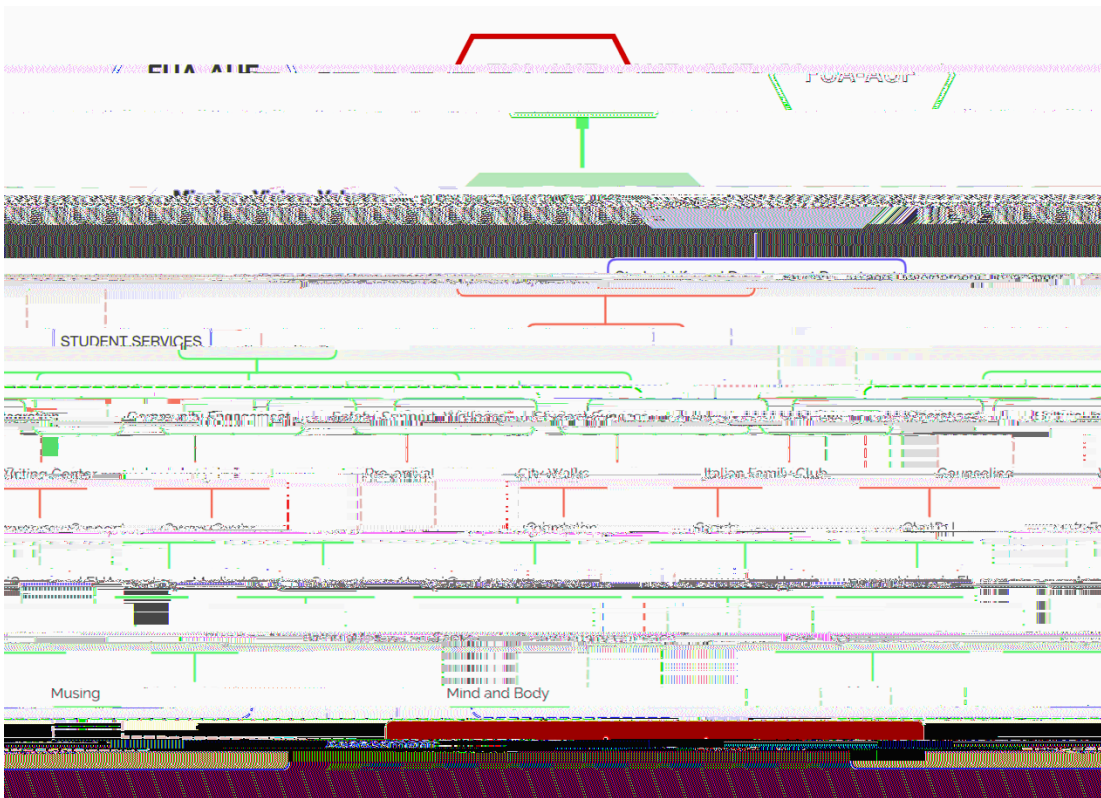
FUA-AUF has created an educational model based on the three main endeavors of its mission: cultural integration, community engagement, and experiential learning. The model has been specifically developed and tailored to address the learning needs of students in international contexts through the simultaneous acquisition of knowledge and competence. Its unique and singular approach to merging culture, community, and the classroom is made possible by the institution's academic methodologies and campus facilities.

The model can be summarized by the following principles:

- The institutional **mission, vision, and values** are referenced by the **academic system** in all operations related to how courses are planned, developed, implemented, delivered, and assessed.
- A key strategy is **academic mapping** for shaping and reviewing the curriculum of all departments as to define clear objectives and outcomes.
- Academic mapping allows for the development of unique **learning resources** such as FUA-AUF's CEMI model (community projects), Academic Event Calendar (course projects open to the community), and approach to learning spaces (regarding FUA-AUF facilities).
- The above resources are practiced through specific **learning tools** for courses as listed below:
 - Experiential Learning (EL)
 - Field Learning (FL)
 - Service Learning (SL)
 - Studies with a Language Component (SLC)
 - Walks Without a Classroom (WWAC)
- The results of FUA-



The model can be operated in any



TUITION COSTS PER CREDIT: ON CAMPUS

Please note for Field Learning Programs:

ICONIC FLORENCE TUITION COST PER COURSE: REMOTE LEARNING

NON-CREDIT

HOUSING AND FIELD LEARNING RESIDENCY COSTS

Costs include:

Costs do not include:

Apartment stay

Included meal plan:

Single Supplement:

Family Stay and Field Learning Residency

Included meal plan:

Single Supplement:

For FUA-AUF
(in the name and on behalf of all its institutions):

For New Jersey City University